

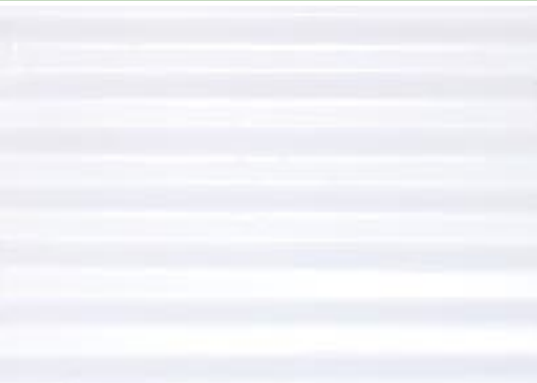


# VANBERG SPECIALIZED COATINGS

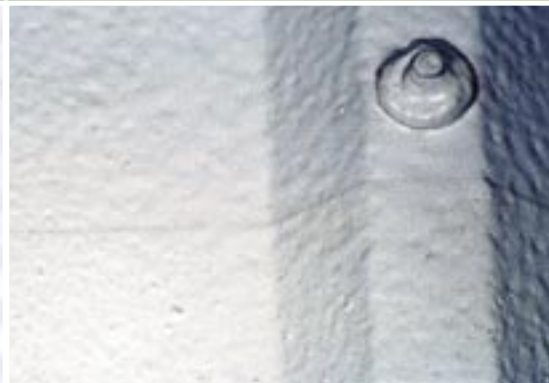
CONCRETE REPAIR & PROTECTION PRODUCTS

*"Products and Systems for Pork Production Since 1989"*

## METAL REPAIR & PROTECTION



V-THANE URETHANE COATING



ACRYLIC COAT MEMBRANE



ARMORCOAT 65 EPOXY COATING

*Don't wait until  
replacement is needed!*

*Save time and  
money by repairing  
and protecting now!*

As metal roofs, ceilings and walls age, protective coatings begin to degrade. White rust (chalking) begins to form and then red rust soon follows. Without attention, corrosion and extensive rusting will result in no other option but replacement. Replacing metal panels is a costly and time-consuming process. This is especially true for interior walls and ceilings, as it requires taking down electrical, plumbing fixtures and equipment and then re-installation.

VSC metal repair and protection products are designed to quickly and easily repair, coat and protect deteriorating metal surfaces. They are a cost-effective way to greatly extend the life of metal. They are also formulated to withstand corrosive and tough environments. So, whether a repair is needed or a complete roof coating system, VSC has a solution for you.

## V-THANE URETHANE METAL COATING

V-THANE is a high performance two-component urethane. It exhibits excellent chemical and weather resistance and will not discolor or chalk when exposed to UV light. When combined with VSC ZINC additive, V-THANE significantly inhibits the development of corrosion. It can be used as a stand-alone coating or as a topcoat over a prime coat of ARMORCOAT 65 metal coating. It also works on concrete and wood surfaces.

**Typical Uses:** Interior and exterior metal surfaces on live-stock, automotive, industrial, farm and institutional facilities.

**Typical Coverage:** 300 sq. ft. per gallon as stand-alone coating. 400 – 500 sq. ft. as topcoat.

**Application:** Brush, roller or spray  
(Industrial airless – see data sheet)

**Availability:** *Specify color when ordering*  
#UG320V **1.5 Gallon Unit** (white or med. gray)  
#UG320V-3 **3 Gallon Unit\*** (white or med. gray)  
#AC105Z-3 **3 Lb. Tub ZINC**

\*Contains (2) 1.5 gallon units

Other colors are optional: Contact VSC for options

## ACRYLIC COAT ELASTOMERIC MEMBRANE

ACRYLIC COAT is a single component high build coating system that is ideal for buildings with roofs that have movement and are leaking. It resists molds, mildew, weather extremes and UV light exposure. As a membrane, it bridges seams, splits and screw heads maintaining a continuous coating that prevents or stops water seepage.

**Typical Usage:** All exterior metal roofs. It is not designed to go over tar or rubber-based coatings.

**Typical Coverage:** 40 – 100 sq. ft. per gallon per coat.

**Application:** Brush, roller or spray  
(Industrial sprayer – see data sheet)

**Availability:**  
#RC811FPW-5 **5-Gallon Unit** (white)  
#RC811FPG-5 **5-Gallon Unit** (gray)  
#RC811FPB-5 **5-Gallon Unit** (beige)



## ACRYLIC CAULK

Elastomeric single component polymer caulk for filling or sealing seams, splits, laps screw heads. Use prior to coating with ACRYLIC COAT or, use as a stand-alone caulk. Use on roofs, walls and bins.

**Availability:**

#RC815M-3 3.5 Gallon Unit (white)



## ARMORCOAT 65 EPOXY METAL COATING

ARMORCOT 65 is a high performance two-component epoxy. Like V-THANE it exhibits excellent chemical and weather resistance. However, light colors will discolor or chalk when exposed to UV light. When combined with VSC ZINC additive, ARMORCOAT 65 significantly inhibits the development of corrosion. It can be used as a stand-alone coating or as a topcoat over a prime coat of ARMORCOAT 65 metal coating. It also works on concrete and wood surfaces.

**Typical Uses:** Interior and exterior (darker colors) metal surfaces on livestock, automotive, industrial, farm and institutional facilities.

**Typical Coverage:** 300 sq. ft. per gallon as stand-alone coating. 400 – 500 sq. ft. as topcoat.

**Application:** Brush, roller or spray  
(Industrial airless – see data sheet)

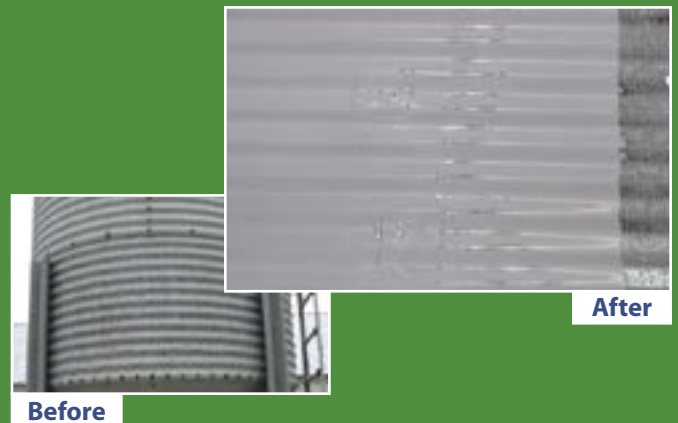
**Availability:**

#AC105-2 2 Gallon Unit (med. gray)

#AC105-10 10 Gallon Unit (med. gray)

#AC105Z-2 2 Lb. Tub ZINC

Other colors are optional: Contact VSC for options



## VSC SEAM TAPE

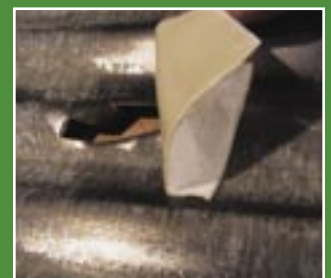
This contouring, self-adhesive and high-strength seam tape is great for repairing holes, loose screw heads, splits and seam separations. It will stop leaks as well. It has excellent structural strength, superior adhesion and accepts the solvent-based coatings ARMORCOAT 65 and V-THANE (unlike Butyl seam tapes). Just press the tape onto the surface work into the split, seam or hole.

**Availability:**

#RC800-2 2" x 50' Roll



VSC SEAM TAPE Roll



Place Seam Tape



Apply Coating



Finished Repair



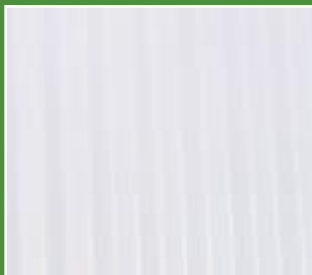
Rusty Roof



Apply Converter



Conversion Completed



Coating Applied

## VSC RUST CONVERTER

VSC RUST CONVERTER stops rust in its tracks preventing further corrosion and rusting on metal surfaces. When applied it chemically converts rust into a stable black compound. It will oxidize other corrosion and scale. A clear acrylic layer then forms over the converted rust that can be coated with ARMORCOAT 65 or V-THANE. Or, the clear acrylic layer will last as a stand-alone coating.

**Typical Uses:** Metal roofs, ceilings and walls on livestock, plant, institutional and farm buildings. It is effective on equipment, boats, tools and virtually any metal structure.

**Typical Coverage:** Variable, typically up to 800 sq. ft. per gal.

**Application:** Brush, roller or spray

**Availability:**  
#RC900-1      1 Gallon (4/case)

## VSC ZINC ADDITIVE

VSC ZINC powder, when added to ARMORCOAT 65 or V-THANE coatings, acts as a sacrificing compound that protects the metal substrate from further corrosion. Zinc is well known to significantly reduce the rate of corrosion versus coatings without Zinc. Excellent for prime coats and stand-alone coatings.

**Typical Coverage:** 1 lb. per gallon of ARMORCOAT 65 or V-THANE

**Availability:**  
#AC105Z-2      2 Lb. Tub      (for AC65 2 Gal. Unit)  
#AC105Z-3      3 Lb. Tub      (for V-THANE 3 Gal. Unit)



## VANBERG SPECIALIZED COATINGS

CONCRETE REPAIR & PROTECTION PRODUCTS

*"Products and Systems for Pork Production Since 1989"*

P.O. Box 19414, Lenexa, KS 66285-9414      (913) 599-5939      FAX: (913) 599-5949  
Toll Free: 1-800-874-0631      E-mail: [vsc@vanbergcoatings.com](mailto:vsc@vanbergcoatings.com)      Web: [www.vanbergcoatings.com](http://www.vanbergcoatings.com)